

veterinary technology for life

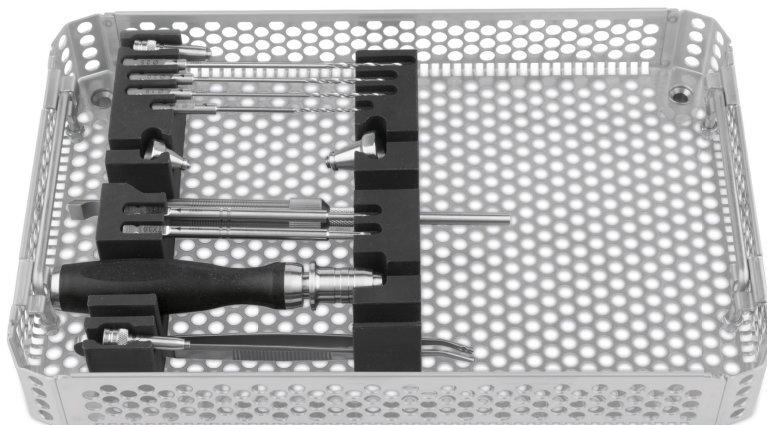
Eickemeyer®

www.eickemeyer.co.uk

Telephone 020 8891 2007

EickLoxx TPLO

A universal polyaxial osteosynthesis system
for small animals up to approx. 60 kg



EICKLOXX TPLO OSTEOSYNTHESIS SYSTEM – COMPONENTS

The EickLoxx TPLO is a newly developed, angle-stable, osteosynthesis system, recommended for dogs and cats weighing up to c. 60 kg.

As with the EickLoxx Small and Large osteosynthesis systems, the EickLoxx TPLO differentiates itself with the polyaxial placement of custom-fit screws, combining the advantages of being an angle-stable system with the ability to place screws at an angle of up to $\pm 15^\circ$ in the distal plate area. A unidirectional jig funnel is placed in a pre-angled direction to guide the screws at the head of the plate.

The biocompatible titanium plates are available in seven sizes, for both the right and left stifle. The anatomically contoured plates can also be bent, in two different planes, to ensure a perfect fit and good perfusion of the bone.

The plate sizes XS and S can be used with either $\varnothing 1.7$ mm or $\varnothing 2.3$ mm screws. The larger plates can also be combined with $\varnothing 2.7$ mm and $\varnothing 3.5$ mm screws. The plate sizes XS and S as well as the $\varnothing 1.7$ mm, $\varnothing 2.3$ mm and $\varnothing 4.0$ mm screws are not included in the TPLO Kit and can be added if necessary.

The system consists of two perforated instrument trays that fit inside a single container:

- ▶ TPLO Perforated Tray 1 contains the instruments
- ▶ TPLO Perforated Tray 2 contains:
 - Plate sizes M – XXXL (left and right)
 - Implant module for screws $\varnothing 1.7$, 2.3, 2.7, 3.5 and 4.0 mm

Titanium EickLoxx TPLO Plates

- ▶ Bendable
- ▶ Multidirectional locking
- ▶ System: 2.7 / 3.5
- ▶ 5 locking plates, for both left and right, 3/3 and 4/4 holes, 46 – 85 mm

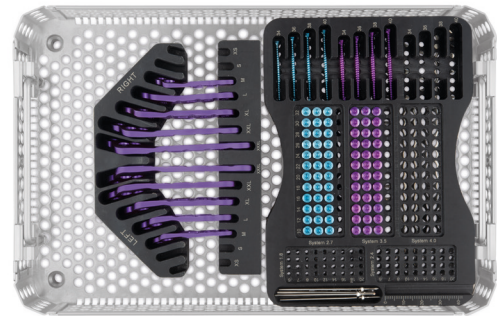
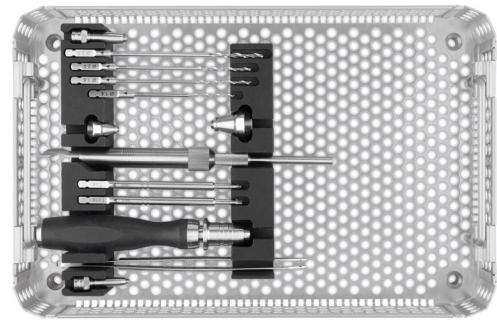
187762 – 187766 / 187772 – 187776

Titanium Locking Screws

- ▶ Self-drilling, self-tapping
- ▶ 40 Titanium Locking Screws $\varnothing 2.7$ mm, light blue, length: 10 – 40 mm
- ▶ 40 Titanium Locking Screws $\varnothing 3.5$ mm, magenta, length: 10 – 40 mm

The geometry of the screw heads and screw holes allow for multidirectional placement $\pm 15^\circ$ longitudinally and transversally, with the aid of a drill guide funnel.

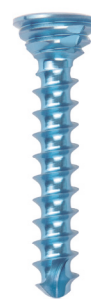
185535 – 185545 / 185570 – 185585 / 185600 – 185604



187735



187763



185538



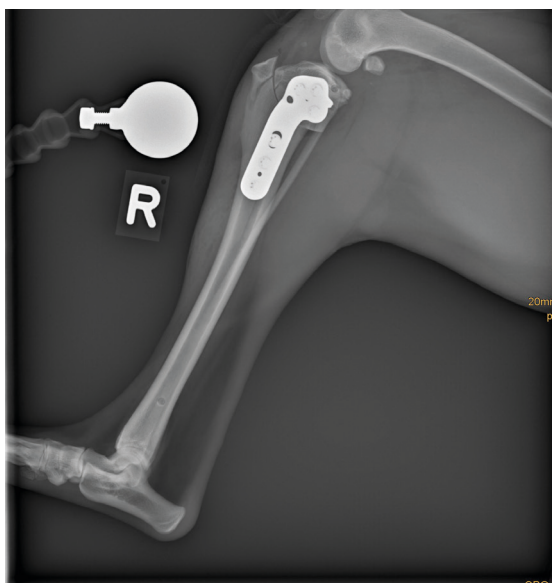
185573

EICKLOXX TPLO OSTEOSYNTHESIS SYSTEM – CHARACTERISTICS

- ▶ The EickLoxx TPLO bone plates minimize contact with the periosteum and therefore, unlike conventional compression plates, reduce the iatrogenic load on the bone, allowing good perfusion and healing.
- ▶ Maintaining perfusion significantly reduces the risk of infection and accelerates bone healing
- ▶ The biocompatibility of the titanium increases the resistance to infection and reduces the risk of fretting

Biological benefits

- ▶ Reduces damage to the vascular supply
- ▶ Increased resistance to infection
- ▶ Accelerated healing



EICKLOXX TPLO OSTEOSYNTHESIS SYSTEM – ITEM LIST

EickLoxx TPLO Osteosynthesis System		
Item No.	Description	Quantity
187735	Complete set, consisting of:	
185564	EickLoxx TPLO Sieve Tray 1, without instruments	1
185565	EickLoxx TPLO Sieve Tray 2, without implants	1
187035	EickLoxx Screw Implant Module, without screws	1
185507	Twist Drill, Ø 1.4 mm, AO Quick Coupling	1
185508	Twist Drill, Ø 1.8 mm, AO Quick Coupling	1
185509	Twist Drill, Ø 2.0 mm, AO Quick Coupling	1
197735	Twist Drill, Ø 2.5 mm, AO Quick Coupling	1
185510	Screwdriver Blade, Torx 6, AO Quick Coupling	1
185511	Screwdriver Blade, Torx 10, AO Quick Coupling	1
185512	Drill Guide Funnel, multi-directional, 1.7/2.3	1
185513	Drill Guide Funnel, multi-directional, 2.7/3.5/4.0	1
185779	Plate and Screw Holding Forceps, stainless steel, angled, L 150 mm	1
185515	Silicone Screwdriver Handle, cannulated, AO Quick Coupling, L 120 mm	1
187737	Depth Gauge, measuring range 50 mm, probe 1.3 mm	1
185562	Jig Funnel, unidirectional 1.7 / 2.3	1
185563	Jig Funnel, unidirectional, 2.7 / 3.5 / 4.0	1
185516	Plate Positioning Pin, Ø 1.4 x L 63 mm	4
185535	Titanium Locking Screw, Ø 2.7 x L 10 mm, multi-directional, light blue, Torx 10, self-drilling, self-tapping	3
185536	Titanium Locking Screw, Ø 2.7 x L 12 mm, multi-directional, light blue, Torx 10, self-drilling, self-tapping	3
185537	Titanium Locking Screw, Ø 2.7 x L 14 mm, multi-directional, light blue, Torx 10, self-drilling, self-tapping	3
185538	Titanium Locking Screw, Ø 2.7 x L 16 mm, multi-directional, light blue, Torx 10, self-drilling, self-tapping	3
185539	Titanium Locking Screw, Ø 2.7 x L 18 mm, multi-directional, light blue, Torx 10, self-drilling, self-tapping	3
185540	Titanium Locking Screw, Ø 2.7 x L 20 mm, multi-directional, light blue, Torx 10, self-drilling, self-tapping	3
185541	Titanium Locking Screw, Ø 2.7 x L 22 mm, multi-directional, light blue, Torx 10, self-drilling, self-tapping	3
185542	Titanium Locking Screw, Ø 2.7 x L 24 mm, multi-directional, light blue, Torx 10, self-drilling, self-tapping	3
185543	Titanium Locking Screw, Ø 2.7 x L 26 mm, multi-directional, light blue, Torx 10, self-drilling, self-tapping	3
185544	Titanium Locking Screw, Ø 2.7 x L 28 mm, multi-directional, light blue, Torx 10, self-drilling, self-tapping	3
185545	Titanium Locking Screw, Ø 2.7 x L 30 mm, multi-directional, light blue, Torx 10, self-drilling, self-tapping	3
185600	Titanium Locking Screw, Ø 2.7 x L 32 mm, multi-directional, light blue, Torx 10, self-drilling, self-tapping	3
185601	Titanium Locking Screw, Ø 2.7 x L 34 mm, multi-directional, light blue, Torx 10, self-drilling, self-tapping	1
185602	Titanium Locking Screw, Ø 2.7 x L 36 mm, multi-directional, light blue, Torx 10, self-drilling, self-tapping	1
185603	Titanium Locking Screw, Ø 2.7 x L 38 mm, multi-directional, light blue, Torx 10, self-drilling, self-tapping	1
185604	Titanium Locking Screw, Ø 2.7 x L 40 mm, multi-directional, light blue, Torx 10, self-drilling, self-tapping	1
185570	Titanium Locking Screw, Ø 3.5 x L 10 mm, multi-directional, magenta, Torx 10, self-drilling, self-tapping	3
185571	Titanium Locking Screw, Ø 3.5 x L 12 mm, multi-directional, magenta, Torx 10, self-drilling, self-tapping	3
185572	Titanium Locking Screw, Ø 3.5 x L 14 mm, multi-directional, magenta, Torx 10, self-drilling, self-tapping	3
185573	Titanium Locking Screw, Ø 3.5 x L 16 mm, multi-directional, magenta, Torx 10, self-drilling, self-tapping	3
185574	Titanium Locking Screw, Ø 3.5 x L 18 mm, multi-directional, magenta, Torx 10, self-drilling, self-tapping	3
185575	Titanium Locking Screw, Ø 3.5 x L 20 mm, multi-directional, magenta, Torx 10, self-drilling, self-tapping	3
185576	Titanium Locking Screw, Ø 3.5 x L 22 mm, multi-directional, magenta, Torx 10, self-drilling, self-tapping	3
185577	Titanium Locking Screw, Ø 3.5 x L 24 mm, multi-directional, magenta, Torx 10, self-drilling, self-tapping	3
185578	Titanium Locking Screw, Ø 3.5 x L 26 mm, multi-directional, magenta, Torx 10, self-drilling, self-tapping	3
185579	Titanium Locking Screw, Ø 3.5 x L 28 mm, multi-directional, magenta, Torx 10, self-drilling, self-tapping	3
185580	Titanium Locking Screw, Ø 3.5 x L 30 mm, multi-directional, magenta, Torx 10, self-drilling, self-tapping	3
185581	Titanium Locking Screw, Ø 3.5 x L 32 mm, multi-directional, magenta, Torx 10, self-drilling, self-tapping	3
185582	Titanium Locking Screw, Ø 3.5 x L 34 mm, multi-directional, magenta, Torx 10, self-drilling, self-tapping	1
185583	Titanium Locking Screw, Ø 3.5 x L 36 mm, multi-directional, magenta, Torx 10, self-drilling, self-tapping	1
185584	Titanium Locking Screw, Ø 3.5 x L 38 mm, multi-directional, magenta, Torx 10, self-drilling, self-tapping	1
185585	Titanium Locking Screw, Ø 3.5 x L 40 mm, multi-directional, magenta, Torx 10, self-drilling, self-tapping	1

EICKLOXX TPLO OSTEOSYNTHESIS SYSTEM – ITEM LIST

EickLoxx TPLO Osteosynthesis System		
Item No.	Description	Quantity
187762	TPLO Locking Plate, 3/3 holes, M, right, System 2.7 / 3.5, titanium, magenta, L 46 mm	1
187772	TPLO Locking Plate, 3/3 holes, M, left, System 2.7 / 3.5, titanium, magenta, L 46 mm	1
187763	TPLO Locking Plate, 3/3 holes, L, right, System 2.7 / 3.5, titanium, magenta, L 54 mm	1
187773	TPLO Locking Plate, 3/3 holes, L, left, System 2.7 / 3.5, titanium, magenta, L 54 mm	1
187764	TPLO Locking Plate, 3/3 holes, XL, right, System 2.7 / 3.5, titanium, magenta, L 64 mm	1
187774	TPLO Locking Plate, 3/3 holes, XL, left, System 2.7 / 3.5, titanium, magenta, L 64 mm	1
187765	TPLO Locking Plate, 4/4 holes, XXL, right, System 2.7 / 3.5, titanium, magenta, L 74 mm	1
187775	TPLO Locking Plate, 4/4 holes, XXL, left, System 2.7 / 3.5, titanium, magenta, L 74 mm	1
187766	TPLO Locking Plate, 4/4 holes, XXXL, right, System 2.7 / 3.5, titanium, magenta, L 85 mm	1
187776	TPLO Locking Plate, 4/4 holes, XXXL, left, System 2.7 / 3.5, titanium, magenta, L 85 mm	1
185555	Container, non-perforated bottom, perforated lid, silver, dimensions (in mm): L 312 x W 183 x H 122 mm	1

Optional Accessories		
Item No.	Description	Quantity
185521	Titanium Locking Screw Ø 1.7 x L 8 mm, multi-directional, silver, Torx 6, self-drilling, self-tapping	1
185522	Titanium Locking Screw Ø 1.7 x L 10 mm, multi-directional, silver, Torx 6, self-drilling, self-tapping	1
185523	Titanium Locking Screw, Ø 1.7 x L 12 mm, multi-directional, silver, Torx 6, self-drilling, self-tapping	1
185524	Titanium Locking Screw, Ø 1.7 x L 14 mm, multi-directional, silver, Torx 6, self-drilling, self-tapping	1
185525	Titanium Locking Screw, Ø 1.7 x L 16 mm, multi-directional, silver, Torx 6, self-drilling, self-tapping	1
185526	Titanium Locking Screw, Ø 1.7 x L 18 mm, multi-directional, silver, Torx 6, self-drilling, self-tapping	1
185527	Titanium Locking Screw, Ø 1.7 x L 20 mm, multi-directional, silver, Torx 6, self-drilling, self-tapping	1
185528	Titanium Locking Screw, Ø 2.3 x L 8 mm, multi-directional, gold, Torx 6, self-drilling, self-tapping	1
185529	Titanium Locking Screw, Ø 2.3 x L 10 mm, multi-directional, gold, Torx 6, self-drilling, self-tapping	1
185530	Titanium Locking Screw, Ø 2.3 x L 12 mm, multi-directional, gold, Torx 6, self-drilling, self-tapping	1
185531	Titanium Locking Screw, Ø 2.3 x L 14 mm, multi-directional, gold, Torx 6, self-drilling, self-tapping	1
185532	Titanium Locking Screw, Ø 2.3 x L 16 mm, multi-directional, gold, Torx 6, self-drilling, self-tapping	1
185533	Titanium Locking Screw, Ø 2.3 x L 18 mm, multi-directional, gold, Torx 6, self-drilling, self-tapping	1
185534	Titanium Locking Screw, Ø 2.3 x L 20 mm, multi-directional, gold, Torx 6, self-drilling, self-tapping	1
185590	Titanium Locking Screw, Ø 4.0 x L 10 mm, multi-directional, blue, Torx 10, self-drilling, self-tapping	1
185591	Titanium Locking Screw, Ø 4.0 x L 12 mm, multi-directional, blue, Torx 10, self-drilling, self-tapping	1
185592	Titanium Locking Screw, Ø 4.0 x L 14 mm, multi-directional, blue, Torx 10, self-drilling, self-tapping	1
185593	Titanium Locking Screw, Ø 4.0 x L 16 mm, multi-directional, blue, Torx 10, self-drilling, self-tapping	1
185594	Titanium Locking Screw, Ø 4.0 x L 18 mm, multi-directional, blue, Torx 10, self-drilling, self-tapping	1
185595	Titanium Locking Screw, Ø 4.0 x L 20 mm, multi-directional, blue, Torx 10, self-drilling, self-tapping	1
185596	Titanium Locking Screw, Ø 4.0 x L 22 mm, multi-directional, blue, Torx 10, self-drilling, self-tapping	1
185597	Titanium Locking Screw, Ø 4.0 x L 24 mm, multi-directional, blue, Torx 10, self-drilling, self-tapping	1
185460	Titanium Locking Screw, Ø 4.0 x L 26 mm, multi-directional, blue, Torx 10, self-drilling, self-tapping	1
185461	Titanium Locking Screw, Ø 4.0 x L 28 mm, multi-directional, blue, Torx 10, self-drilling, self-tapping	1
185462	Titanium Locking Screw, Ø 4.0 x L 30 mm, multi-directional, blue, Torx 10, self-drilling, self-tapping	1
185463	Titanium Locking Screw, Ø 4.0 x L 32 mm, multi-directional, blue, Torx 10, self-drilling, self-tapping	1
185464	Titanium Locking Screw, Ø 4.0 x L 34 mm, multi-directional, blue, Torx 10, self-drilling, self-tapping	1
185465	Titanium Locking Screw, Ø 4.0 x L 36 mm, multi-directional, blue, Torx 10, self-drilling, self-tapping	1
185466	Titanium Locking Screw, Ø 4.0 x L 38 mm, multi-directional, blue, Torx 10, self-drilling, self-tapping	1
185467	Titanium Locking Screw, Ø 4.0 x L 40 mm, multi-directional, blue, Torx 10, self-drilling, self-tapping	1
187760	TPLO Locking Plate, 3/3 holes, XS, right, System 1.7 / 2.3, titanium, magenta, L 30 mm	1
187770	TPLO Locking Plate, 3/3 holes, XS, left, System 1.7 / 2.3, titanium, magenta, L 30 mm	1
187761	TPLO Locking Plate, 3/3 holes, S, right, System 1.7 / 2.3, titanium, magenta, L 39 mm	1
187771	TPLO Locking Plate, 3/3 holes, S, left, System 1.7 / 2.3, titanium, magenta, L 39 mm	1

[illegible]

NOTES

[illegible]

