

veterinary technology for life

# Eickemeyer®

[www.eickemeyer.co.uk](http://www.eickemeyer.co.uk)

Telephone 020 8891 2007

# *OrthoVet PRO*

## *Battery Powered Drill System*



**modular,  
handy,  
wireless**

## ORTHOVET PRO BATTERY POWERED DRILL SYSTEM – COMPONENTS

### The ideal tool for small animal osteosynthesis

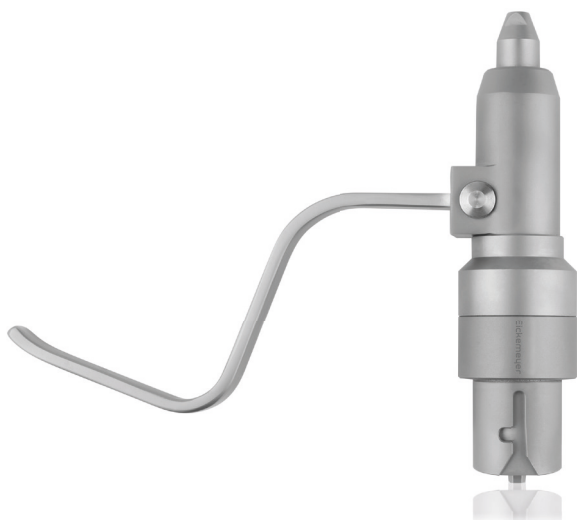
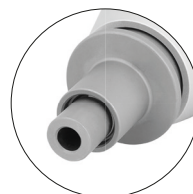
The OrthoVet PRO is a modular, battery-driven drill system designed for small animal osteosynthesis. The modular system consists of a handpiece and four attachments, which can be changed intraoperatively in just a few seconds with a keyless quick coupling.

The handpiece, the quick-release AO Chuck and the Jacobs chuck are cannulated. Thus, cannulated screws or drills can also be tracked over long guide wires in stages, without the guide wire having to be shortened. The oscillating saw has a five-fold adjustable, variable fixation of the saw blade and allows the surgeon an optimised view of the surgical field. The AO quick-release chuck completes the system and makes the OrthoVet PRO a real all-rounder.

Handpiece and attachments can be sterilised / autoclaved. The Li-Ion battery is not autoclavable and is inserted into the handpiece by means of a special holder. Continuous operation is possible in clockwise and anticlockwise motion and, as well as in oscillation with the aw attachment.



195001



195003



195002



195004



195005

## ORTHOVET PRO BATTERY POWERED DRILL SYSTEM – CHARACTERISTICS

---

A 5-fold variable fixation of the saw blade in its fitting allows the surgeon an optimised view of the surgical field (Fig. 1).

The OrthoVet PRO battery powered drill system can be instantly operated by means of the “trigger” on the handpiece, speeds of 0–1,200 rpm or 0–16,000 osc./min.

Handpiece and attachments can be sterilised / autoclaved. For this purpose a washer compatible sterilisation tray (item no. 195087) as well as a suitable sterilisation container (item no. 185555) are optionally available.

The battery (item no. 195007) must not be sterilised/autoclaved! It is inserted into the handpiece via a funnel.

For details on handling and construction, refer to the operating instructions.

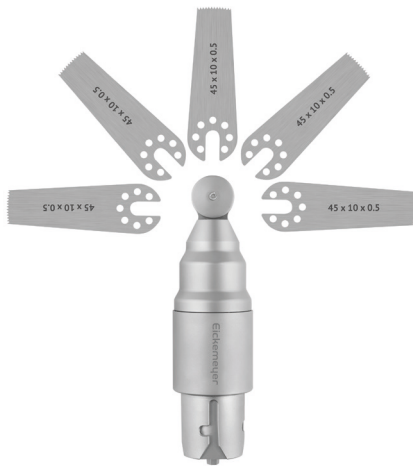
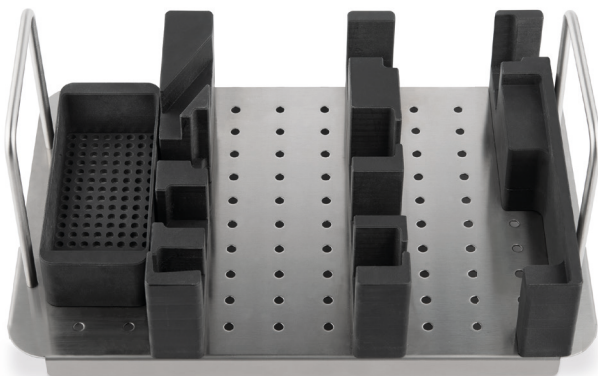


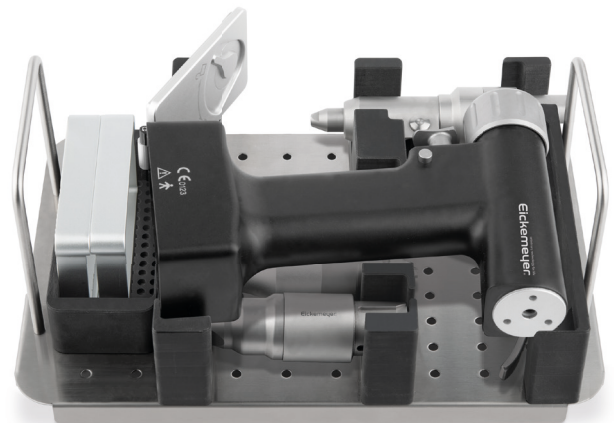
Figure 1



185555



195087



Application

# ORTHOVET PRO BATTERY POWERED DRILL SYSTEM – ITEM LIST

OrthoVet PRO Battery powered Drill System		
Item no.	Description	Quantity
195000	OrthoVet PRO Battery powered Drill System, consisting of:	
195001	OrthoVet PRO Handpiece, without adapters and battery	1
195002	OrthoVet PRO Jacobs Chuck Adapter, clamping range Ø 0.6 – 2.5 mm	1
195003	OrthoVet PRO Quick Coupling Adapter for Pins/KIRSCHNER-Wires, clamping range Ø 0.6 – 2.5 mm	1
195004	OrthoVet PRO Quick Coupling Adapter for AO Tools	1
195005	OrthoVet PRO Oscillating Saw Adapter	1
195006	OrthoVet PRO Battery Charging Station	1
195007	OrthoVet PRO Battery	2
195084	OrthoVet PRO Key to Jacobs Chuck Adapter	1
195008	OrthoVet PRO Funnel for Handpiece	2
195010	OrthoVet PRO Transportation Case, metal, dimensions (in mm): L 390 x W 290 x H 120	1
195030	OrthoVet Saw Blade with AESCULAP Connection, dimensions (in mm): L 40 x W 15 x H 0.5	1
195040	OrthoVet Saw Blade with AESCULAP Connection, dimensions (in mm): L 40 x W 5 x H 0.5	1
195050	OrthoVet Saw Blade with AESCULAP Connection, dimensions (in mm): L 30 x W 7 x H 0.5	1
195060	OrthoVet Saw Blade with AESCULAP Connection, dimensions (in mm): L 50 x W 14 x H 0.5	1

Optional Accessories		
Item no.	Description	Quantity
196130	OrthoVet Saw Blade AESCULAP with Connection, dimensions (in mm): L 50 x W 6.5 x H 0.5	1
196140	OrthoVet Saw Blade AESCULAP with Connection, dimensions (in mm): L 50 x W 8 x H 0.5	1
196150	OrthoVet Saw Blade AESCULAP with Connection, dimensions (in mm): L 45 x W 10 x H 0.5	1
196165	OrthoVet Saw Blade AESCULAP with Connection, dimensions (in mm): L 39 x W 13 x H 0.5	1
196170	OrthoVet Saw Blade AESCULAP with Connection, dimensions (in mm): L 58 x W 10 x H 0.5	1
196180	OrthoVet Saw Blade AESCULAP with Connection, dimensions (in mm): L 64 x W 10 x H 0.5	1
196190	OrthoVet Saw Blade AESCULAP with Connection, dimensions (in mm): L 70 x W 14 x H 0.5	1
195087	OrthoVet PRO Battery Drill System Sterilisation Tray, empty	1
185555	Container, bottom non perforated, lid perforated, dimensions (in mm): L 312 x W 183 x H 122	1
563706	AESCULAP Oil Spray STERILIT, with lubrication and corrosion protection, 300 ml	1
195011	OrthoVet PRO Cleaning Brush, Ø 4.0 mm, length 350 mm, pack of 3 pieces	1